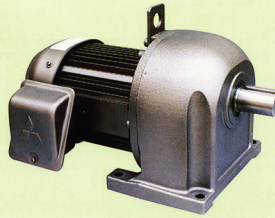
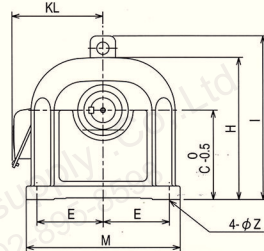
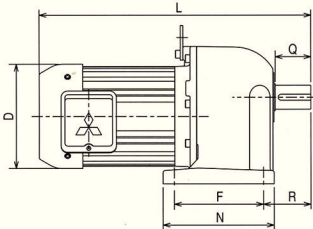


GM-D Series

Output range: 3-phase 0.4~7.5kW
Gear ratio: 1/3~1/120
Moderate shock load
Service factor: 1.4

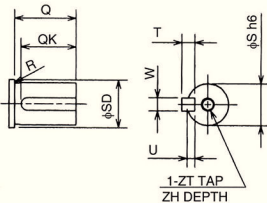


Outline dimensions



Output (kW)	Gear ratio	Dimensions (mm)													Weight (kg)
		L	Q	D	F	R	N	KL	E	M	C	H	I	Z	
0.4	1/3~1/50	289 (341)	36	120	85	50	109	121.5 (119)	75	170	100	160	-	10	10.5 (12)
	1/60	343 (395)	50	120	135	65	161	121.5 (119)	87.5	200	125	195	230	12	23 (24.5)
0.75	1/3~1/30	361 (424)	50	150	120	65	146	139 (138)	87.5	200	120	195	230	12	25.8 (29.4)
	1/40, 1/50	380 (443)	50	150	135	65	161	139 (138)	87.5	200	125	195	230	12	25.8 (29.4)
1.5	1/60	413 (476)	60	150	150	80	187	139 (138)	107.5	250	145	230	265	15	38.8 (42.4)
	1/3~1/30	418 (490)	50	175	115	65	141	149 (148)	102.5	230	140	227	262	12	35.3 (38.9)
	1/40, 1/50	457 (529)	60	175	150	80	187	149 (148)	107.5	250	145	230	265	15	44.3 (47.9)
	1/60	484 (556)	75	175	170	95	206	149 (148)	125	285	170	275	310	15	57.3 (60.9)
2.2	1/3~1/30	471 (538)	60	206	150	80	187	161 (160)	107.5	250	145	230	265	15	48.8 (53.5)
	1/40, 1/50	497 (564)	75	206	170	95	206	161 (160)	125	285	170	275	310	15	61.8 (66.5)
	1/60	540 (607)	82	206	200	107	240	161 (160)	130	300	195	330	345	19	78.2 (82.9)
3.7	1/3~1/30	543 (618)	75	235	170	95	206	175 (174)	125	285	170	275	310	15	82.3 (88.6)
	1/40, 1/50	584 (659)	82	235	200	107	240	175 (174)	130	300	195	330	345	19	98.7 (105)
	1/60	618 (693)	90	235	230	120	280	175 (174)	150	350	230	380	395	24	134 (140)

Shaft end dimensions



Gear size	Dimensions (mm)												
	Q	QK	φS h6	W(key) h9	T(key) h9	U	ZT	ZH	R	φSD			
D	36	32	22	6	0	3.5				24			
E	42	36	28	8	0	4		0.4		29			
F													
G	50	45	32	10	0	5	M8	12	0.8	34			
H													
J	60	55	40	12	0	5			1.6	45			
L	75	70	48	14	0	5.5				50			
M	82	71	55	16	0	6		0.8		58			
N	90	72	60	18	0	7	M10	18		63			